

PRY-CAM

Breakthrough technology for monitoring, condition assessment
and asset management of electrical systems



A Brand of Prysmian Group

For data-driven
power

Welcome to



A Brand of Prysmian Group

A revolution in monitoring, condition assessment and asset management of electrical systems

The worlds of monitoring, condition assessment and asset management of electrical systems are undergoing a revolution that can help prevent failures and interruptions, increasing uptime and safety, enhancing assets' longevity and significantly reducing maintenance costs and risks.

It's a revolution that harnesses the extraordinary possibilities of the Internet of Things and enables key parameters measurement and condition assessment data collection. Storage via private Cloud allows remote accessibility and sharing for electrical assets effective maintenance strategies and learning for continuous improvement.



Leading this revolution is PRY-CAM from Prysmian Group

It's a fast, flexible, reliable game-changer and a breakthrough technology paired with a suite of electronics-based products that allow performing online measurements and data gathering of key parameters without service interruption, backed by a database that hosts more than five million measurements that had never been classified and stored before Prysmian did.

For data-driven power

PRY-CAM is faster, more data-driven and more effective than ever before, solving problems today and delivering learning for tomorrow.



Our core values



Revolutionize technologies for the management of electrical assets



Bring innovation to the world of electricity



Create simple products to solve complex problems

Innovative solutions to real-world challenges

Our customers are becoming more and more data-driven. Our mission is to gather data and to classify it so it can be analyzed by automated diagnostics systems.

PRY-CAM is a breakthrough technology that allows online, accurate and reliable measurements of key parameters, diagnosis and defect localization from remote. Data gathered are manifold: conditions of use, malfunctioning and overheating. All is done in real time and without specific expertise required.

Thanks to a whole private cloud-based system built around our technologies, today we have a database that hosts more than five million measurements that had never been classified and stored before Prysmian did.

Prysmian is the first company to develop powerful monitoring, data gathering and diagnostics tools and now the Group is transitioning to a new role: from pure cable manufacturer role to cable system integrator and data provider. This is why Prysmian is a world leader.



The PRY-CAM family

A range of cutting-edge products covering the key aspects of condition assessment and monitoring of electrical systems.

Suitable for any electrical equipment from 3 kV to 600 kV.

Every PRY-CAM product is conceived based on four main pillars



IDENTIFICATION OF PARAMETER TO MEASURE AND DEVELOP A SUITABLE DEVICE



DATA ACQUISITION AND TRANSMISSION



CLOUD PLATFORM STORAGE



MACHINE LEARNING



PRY-CAM
SYSTEM

PRY-CAM SYSTEM integrated combined monitoring solutions consist of one or more PRY-CAM products installed within the same cabinet.

Each PRY-CAM SYSTEM solution can be configured based on the customers' specific requirements in terms of parameters to be monitored to fulfill their specific maintenance and asset management strategies.



Use on HV and MV equipment



CABLES



SWITCHGEAR



SPLICES



TRANSFORMERS



TERMINATIONS



ELECTRICAL MACHINES



DETECT



MONITOR



LOCATE



PREVENT

Products



PRY-CAM PORTABLE

Portable wireless device for the online spot measurement of PD (Partial Discharges).*



PRY-CAM GATE

Fixed device for the permanent measurement of PD on cable joints both in AC (Alternating Current) and DC (Direct Current) electrical systems.**






PRY-CAM GRIDS

Fixed device for the permanent monitoring of PD in AC electrical systems.

APPLICATIONS

* Patented in 2009

** Patented in 2015

 HV & Submarine	<input type="checkbox"/>	<input type="checkbox"/>	<input type="checkbox"/>
 Solar & Wind	<input type="checkbox"/>	<input type="checkbox"/>	<input type="checkbox"/>
 O&G/SURF	<input type="checkbox"/>	<input type="checkbox"/>	<input type="checkbox"/>
 Power Distribution	<input type="checkbox"/>	<input type="checkbox"/>	<input type="checkbox"/>
 Other Industrial (Mining, Cranes, etc.)	<input type="checkbox"/>	<input type="checkbox"/>	<input type="checkbox"/>



PRY-CAM LINKBOX

Enhanced link-box containing self-powered electronic products and sensors capable of transmitting diagnostic information and data (PD, sheath current, SVL state, etc.) through GSM or fiber to a Cloud system.***



PRY-CAM HARVESTER






Device used to acquire power supply from the AC cable system and feed power to the monitoring system when a power connection is not available on site.



PRY-CAM INFRARED

Contactless sensors using infrared technology to detect temperature of objects.

APPLICATIONS

 HV & Submarine	<input type="checkbox"/>	<input type="checkbox"/>	<input type="checkbox"/>
 Solar & Wind	<input type="checkbox"/>	<input type="checkbox"/>	<input type="checkbox"/>
 O&G/SURF	<input type="checkbox"/>	<input type="checkbox"/>	<input type="checkbox"/>
 Power Distribution	<input type="checkbox"/>	<input type="checkbox"/>	<input type="checkbox"/>
 Other Industrial (Mining, Cranes, etc.)	<input type="checkbox"/>	<input type="checkbox"/>	<input type="checkbox"/>

*** Patented in 2016



PRY-CAM
WINGS

Sensors for the fixed measurement of PD and local temperature in AC systems.**

** Patented in 2015



PRY-CAM
D-LOG

Multichannel fixed device for the measurement of key analogue parameters (temperature, pressure, currents, voltage, flooding, intrusion, smoke and more).



PRY-CAM
MINILOG

Single channel fixed device for the measurement of analog parameters (pressure, voltage, etc.).



PRY-CAM
OZONE

Sensor to detect the presence of ozone (O₃) in the confined space surrounding a power grid component.



PRY-CAM
DAS

Fixed optical device using Distributed Acoustic Sensing technology, for the measurement of noises in the vicinity of a cable.



PRY-CAM
DTS

Fixed optical device using Distributed Temperature Sensing technology, for the measurement of the cable temperature along and/or inside a cable.



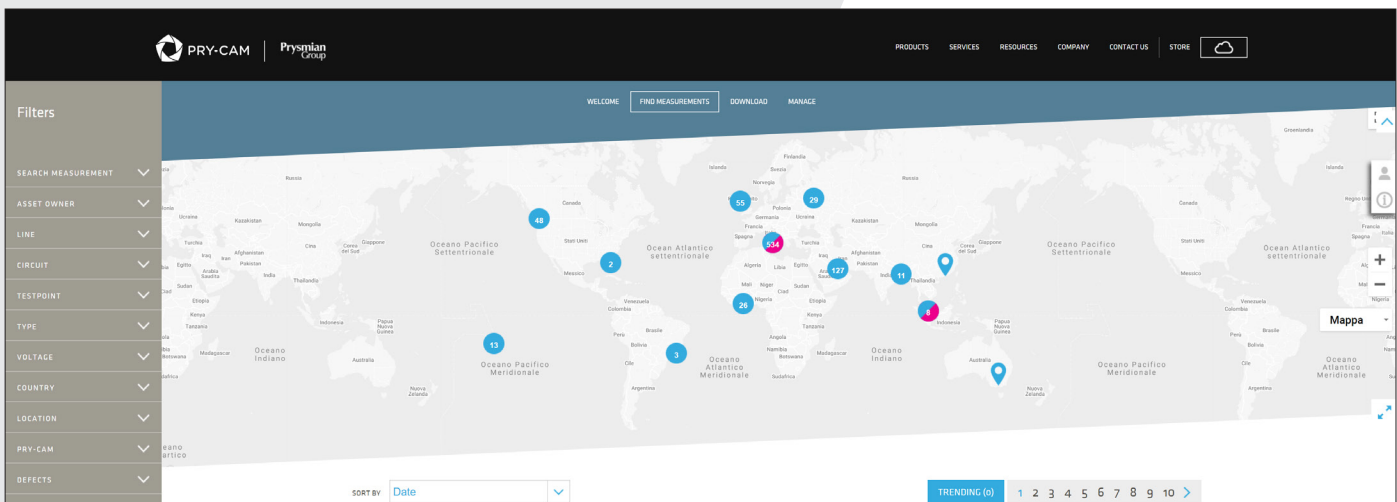
PRY-CAM Cloud

Remote and real-time monitoring and data analysis for better maintenance management.

How it works

The PRY-CAM Cloud is the ideal way to effectively manage your data. Your measurements, collected via PRY-CAM devices, can be safely stored and protected on the PRY-CAM Cloud and used for advanced post processing and learning. You can easily share measurements, test-point details and knowledge within your company.

Manage, store and share your data safely and effectively. You measure, you control, you learn.



ASK AN EXPERT FOR ADVICE

KEY FEATURES



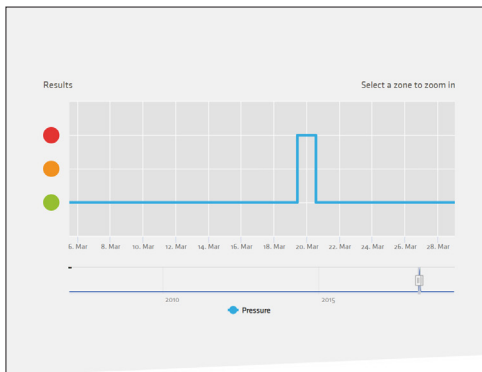
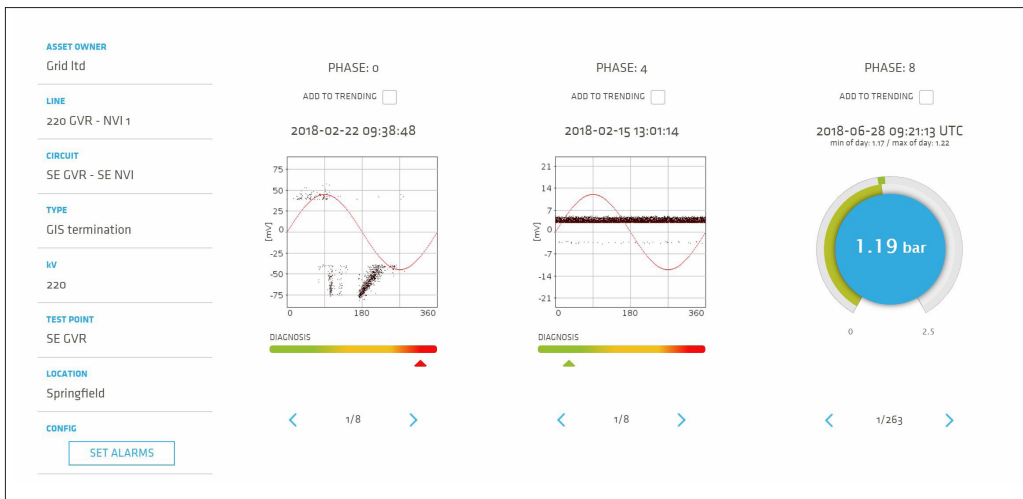
REMOTE & REAL TIME MONITORING



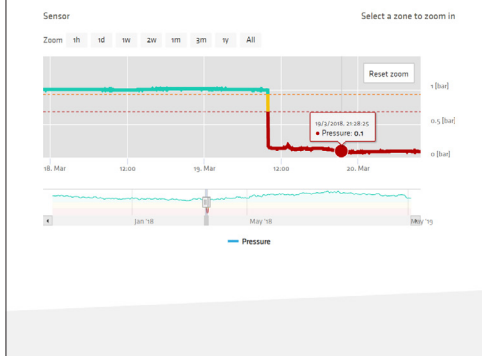
DATA STORAGE AND PROTECTION



REMOTE & REAL TIME DATA PROCESSING & ANALYSIS



- Springfield T1
Pressure
Line: Springfield 1 Circuit: T3 - Phase: B
Springfield
Outdoor termination - 150 kV



The PRY-CAM Cloud hosts all measured parameters, which are analyzed based on the most advanced protocols. For Partial Discharge (PD) automatic diagnosis, PRY-CAM uses a proprietary artificial intelligence algorithm: PRY-CAM BRAIN™.

The analytics functions allow you to evaluate the impact of PRY-CAM technologies on your electrical assets over time. It also generates real-time alarms whenever a critical condition or a malfunction occurs.

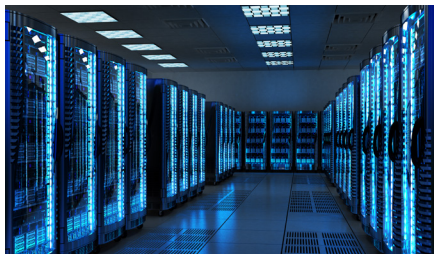
As an option, you can have virtual access to Prysmian PRY-CAM experts with remote diagnosis within 24 hours.

Diagnostics and asset integrity services

Hundreds of failures have already been prevented using PRY-CAM condition assessment and defect locating systems and services.

PRY-CAM supports customers not only with products but also with **services** directly provided by its experts.

REMOTE DATA ANALYSIS



SPOT PD MEASUREMENTS



COMMISSIONING OF ELECTRICAL SYSTEMS

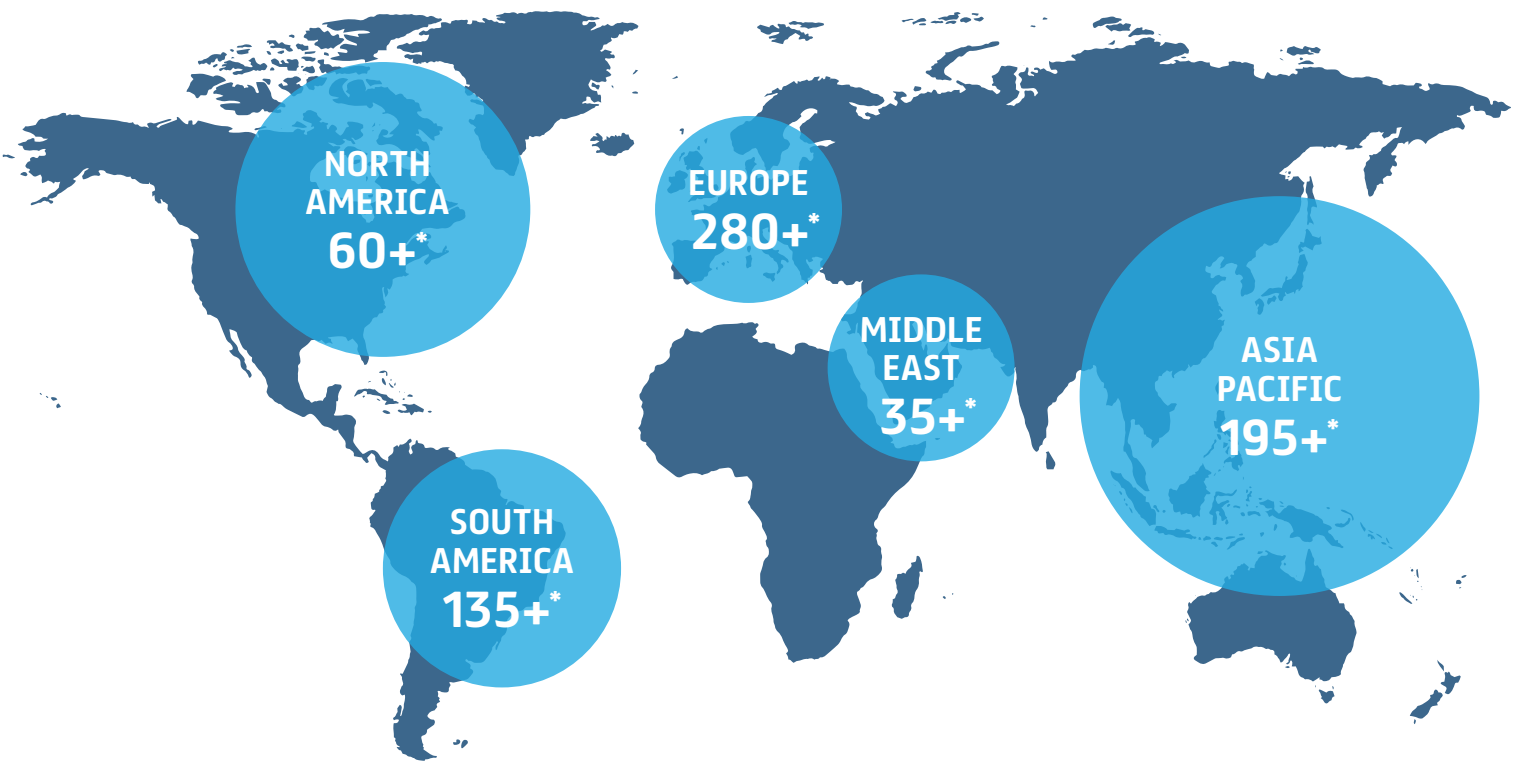


Training & Education

We believe that innovation and knowledge must be shared to achieve the highest level of asset management and condition assessment. For this reason, we can provide you with two types of PRY-CAM training: BASIC and ADVANCED.

For more information, please don't hesitate to contact a member of the team.

Global reach



*Number of permanently monitored test points

Spot PD
measurements
5,000,000+

Monitoring
systems sold
800+

DTS systems
installed
25+

Recurring
customers
150+

PD diagnosis
reliability
rate
100%



A Brand of Prysmian Group

Prysmian Group

4 Tesseneer Drive
Highland Heights, KY 41076
na.pry-cam@prysmiangroup.com
na.prysmiangroup.com
<https://pry-cam.com>

PRC-0001-0320

Follow us:

